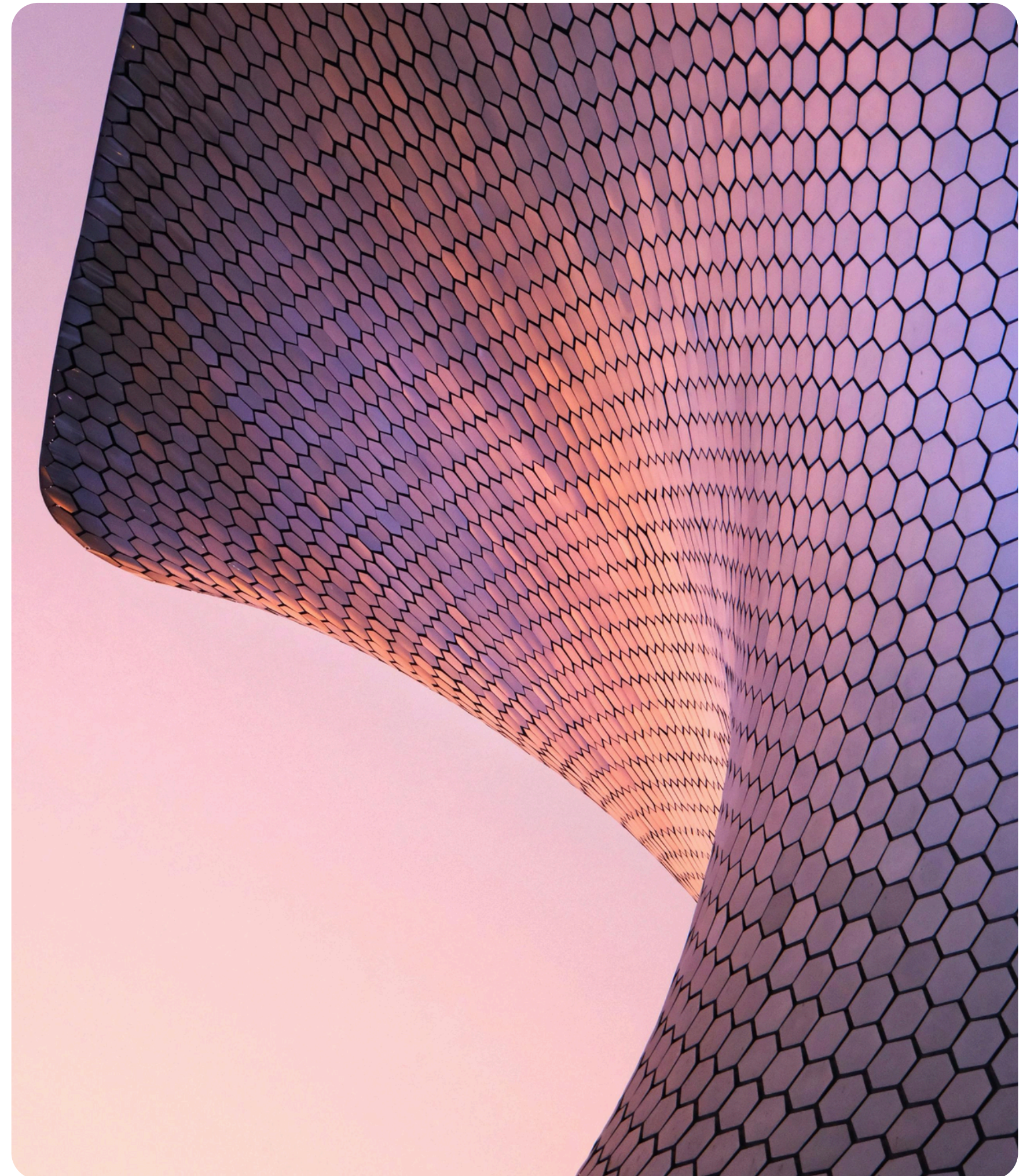


TRUSTIBLE™

What is the
"Perfect"
AI Use Case Intake
Process?

IAPP AIGG N.A. 2025



About TRUSTIBLE™

Who We Are

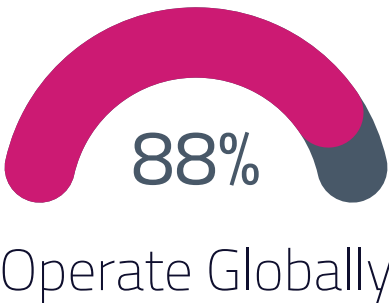
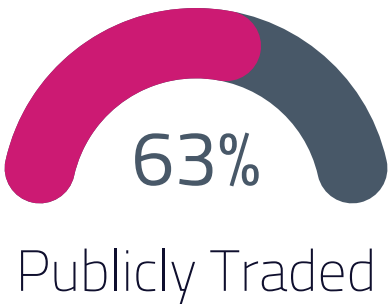
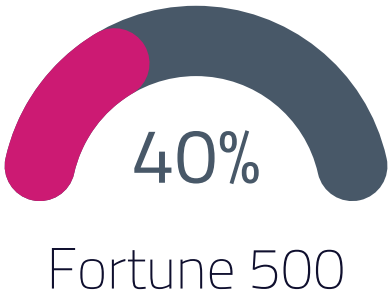
Trustible is the leading AI governance platform enabling safe and compliant AI adoption. Their AI governance platform enables enterprises to identify, measure, and mitigate AI risk to accelerate AI adoption. The company is headquartered in the Washington D.C. area. For more information, visit trustible.ai.

What We do

Responsible AI Governance Software & Solutions
Whether you are building internal AI models, leveraging generative AI or using AI-enabled SaaS applications, Trustible™ enables your organization to manage and mitigate AI risk, build trust, and accelerate responsible AI development. Plus, align your efforts to regulatory frameworks like the EU AI Act, NIST AI RMF, or ISO 42001.

Customer Snapshot

Percent of Trustible customers meeting these criteria



Purpose

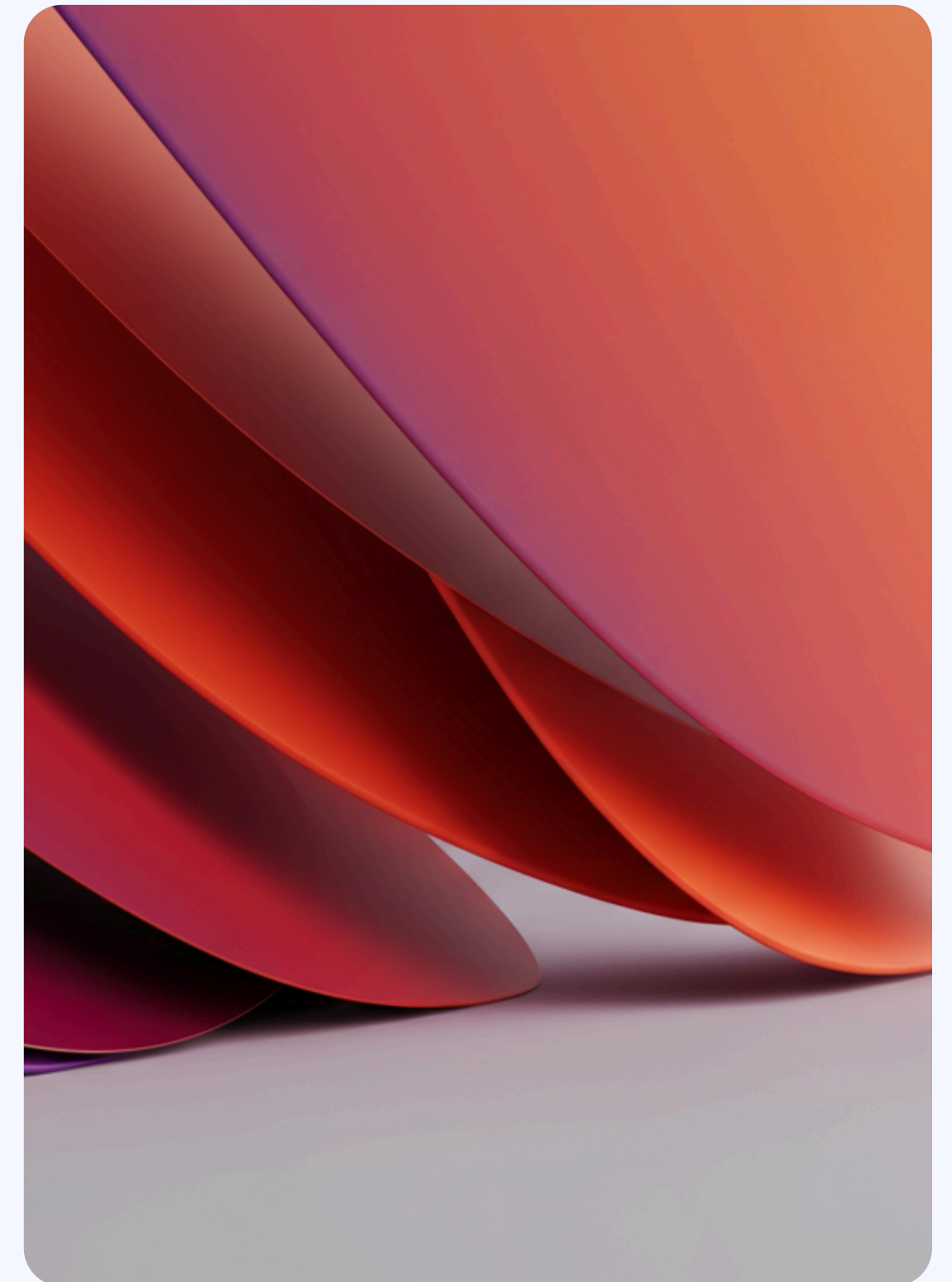
- Explore the challenge of building an effective AI intake process
- Provoke new ways of thinking about “perfection”

Agenda

- Why intake is essential
- Core tensions in designing a process
- Panel Discussion: Lessons & pitfalls from the field

Outcome

- Clearer sense of trade-offs in intake design
- Practical considerations to balance friction vs. risk
- A provocation: What does your intake process say about you?



SPOILER ALERT

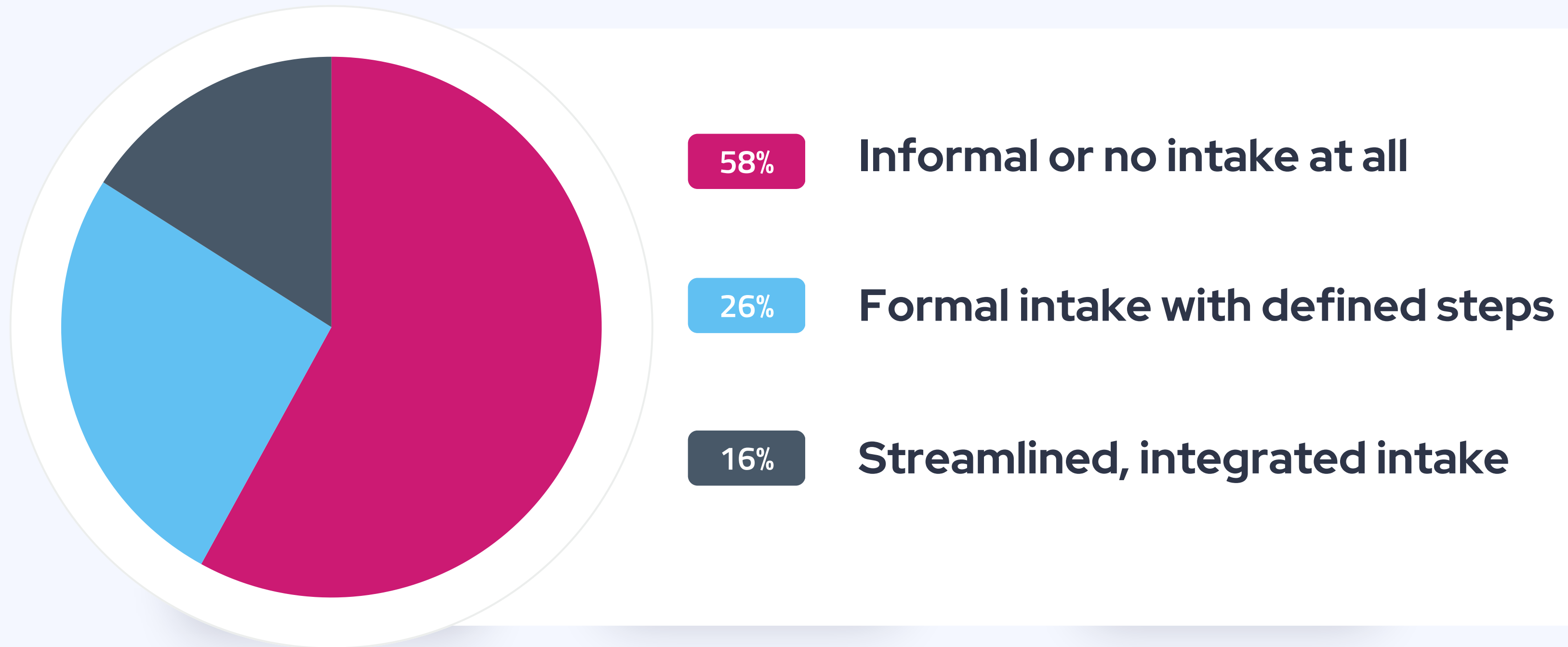
A perfect AI intake process does not exist...
... but you need one anyway

What is an AI Intake Process?

An AI intake process is the front door through which every AI idea, use case, model, system, or vendor passes before it enters your organization.

Where are organizations in their **AI Intake Process maturity**?

We surveyed over 160 organizations: [Trustible's 2025 AI Governance Maturity Assessment](#)



Intake is the foundation for AI governance

- ✓ Every governance framework starts here
- ✓ No intake = no inventory
- ✓ No inventory = no accountability
- ✓ Without intake, AI governance is impossible

But the struggle is real

AI adoption is outpacing governance, making inventories incomplete, messy, or nonexistent.

The right intake is in the details

Too heavy → nobody uses it
Too light → missing critical context
Too late → damage already done

Perfect intake = balancing act

But participation is painful

Business teams: "Too much work!"
Governance teams: "Not enough detail!"
Technical teams: "We don't speak the same language!"

Intake = negotiation between worlds



And if we dig deeper, big questions emerge



How do we keep our AI inventory up to date?



How do you ensure our AI systems are within policy?

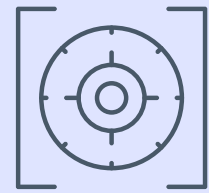


How do identify regulatory requirements?



When should we do a risk/impact assessment?

What should I consider when designing my AI Intake Process?



GRANULARITY

What exactly are we 'intaking'?



HEAVINESS

How much information is needed for this?



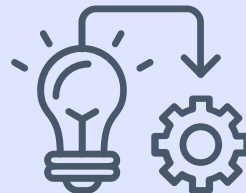
OUTCOMES

What is the 'endpoint' of the intake process?



PARTICIPATION

Who needs to be involved in this process?



IMPLEMENTATION

Where and how does this work actually get done?



TIMELINESS

When should the 'intake' process be done?

TOO LITTLE



TOO MUCH

GRANULARITY	Only a review of new AI-enabled vendors	Every AI experiment, model run, and vendor feature
HEAVINESS	Fill out 10 basic questions	Fill out 50 complex questions, plus uploaded documents
OUTCOMES	Check-the-box documentation only	Approval from every major executive
PARTICIPATION	A non-AI literate IT person conducting the review	A representative from 6 different teams
IMPLEMENTATION	Filling out a word document	Use a custom built tool just for intake processes
TIMELINESS	Right before a system is about to be deployed	At the idea stage, before any experimentation is allowed

SO WHAT IS THE PERFECT
AI USE CASE
INTAKE PROCESS?

PANEL DISCUSSION



Andrew Gamino-Cheong

CTO & Co-Founder

TRUSTIBLE™



Chris Stephenson

Head of AI Strategy & Operations

 **nuix**



Sophia Toomey

Program Manager

 **leidos**

Key Takeaways


- No perfect intake — the right process is always organization-specific, based on size, role, and risk profile.
- Start messy, iterate fast — spreadsheets and ad hoc tools are common starting points; success comes from learning and scaling.
- Cross-functional is critical — legal, privacy, security, product, and HR all need to be part of intake design and review.
- Culture matters — governance works best when framed as risk reduction and supported with education, training, and leadership buy-in.
- Scalability requires automation — organizations quickly outgrow static docs; platforms like Trustible provide continuity and consistency.
- Risk triage is essential — intake should flag high-risk use cases for deeper governance, avoiding bottlenecks while enabling innovation.

Thank you!

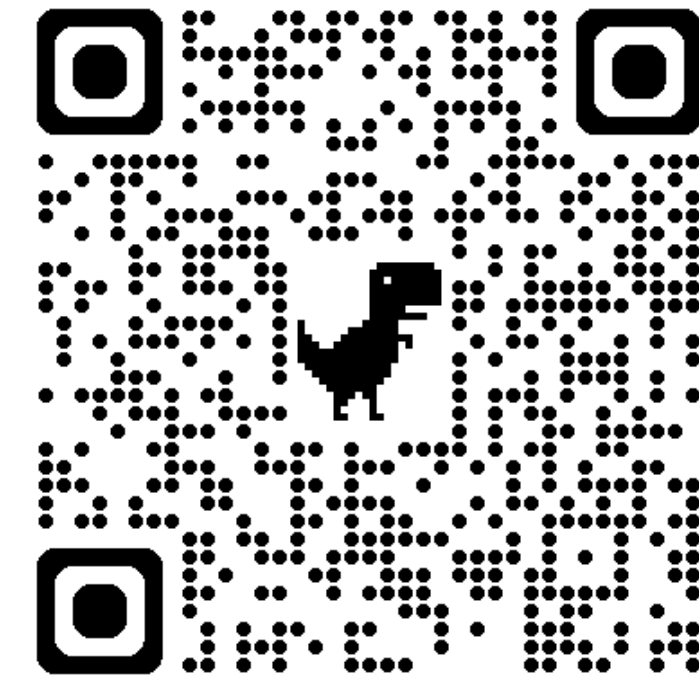
Take your free AI governance
maturity assessment

 **Website** www.trustible.ai

 **E-mail** contact@trustible.ai

 **LinkedIn** <https://www.linkedin.com/company/trustible/>

 **HQ address** 1201 Wilson Blvd, Floor 27, Arlington, VA 22209



TRUSTIBLE.